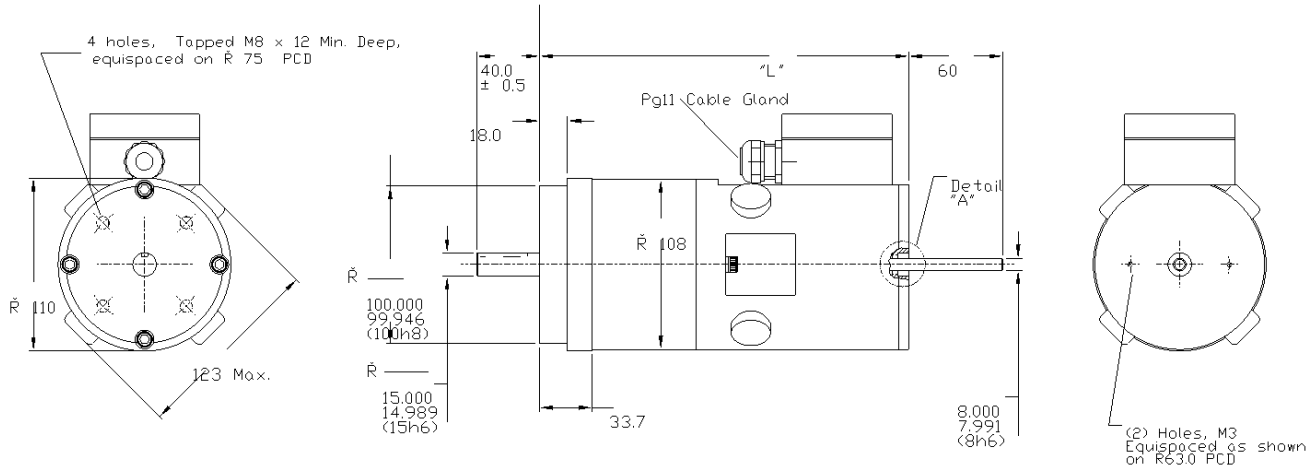


CONNECTIONS		
Motor +	:-	A
Motor -	:-	B
Tach +	:-	C
Tach -	:-	D



DC-728-T-151202

Tech. Daten

Tech. Data

1	Power	P	Watt	900
2	Max. operation speed	η_{max}	rpm	3000
3	Continous Torque (stall) @ 40 °C ambient	T_c	Nm	4,1
4	Peak Torque	T_p	Nm	27,1
5	Current @ cont. torque	I_c	A	11,3
6	Current @ peak torque	I_p	A	90
7	Torque Sensitivity	K_t	Nm/A	0,36
8	Back EMV constant	K_e	V/Krpm	37,8
9	DC.resistance @25°C	L_m	Ohm	0,45
10	Inductance @ 1000Hz	L_{ph}	mH	1,6
11	Voltage Sensitivity	K_g	V/Krpm	14
12	Weight	m	Kg	9,9
13	Lenghts	„L“	mm	253,00

Optional Brake DC-728-T-161202

14	Voltage	VDC	VDC	24
15	Current	I	A	0,7
16	Holding Torque		Nm	8,00
17	Lenghts with Brake	„L“	mm	302